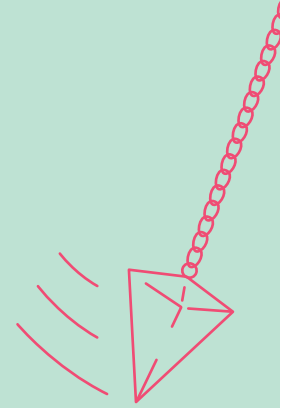


PRACTICAL TIPS ON HOW TO USE THE PENDULUM EFFICIENTLY

by Ingrid Auer



I am often asked how to choose the most effective Angel Symbol, and Angel Essence, for a particular situation. It is much easier with Symbol Cards: you think of your topic, or problem, and draw a card. Then you read the message of the card in the book.

It is more difficult with the Angel Combi Symbols, as there are at least seven symbols for each topic. It might seem a challenge to choose the right one out of 500 Combi Symbols, unless you test which symbol you need for a certain situation.

Some people say it is not necessary to test, that it is possible to choose a symbol, or an essence, intuitively. It is true that when you work with Angel Symbols and Angel Essences, you should follow your instinct, listen to your inner voice, the voice from 'above'. It is part of spiritual development to listen (and follow) this inner voice.

But, that is not to say one cannot work on a rational basis at the same time. Especially, if there are several hundred Angel Symbols, and more than one hundred Angel Essences, as well as numerous Angel Combi Oils, and Angel Aura Essences, to choose from. Not to mention, the Master Symbols, and Master Aura Essences.

Tools, such as the pendulum, dowser, kinesiologic muscle test, pendulum tables, or checklists, are an enormous help when choosing the ideal product. Work with the pendulum gets much easier, especially if you want to discover the background and reason for blockages, outdated beliefs, old programs or pressing problems, and then to detect the most appropriate tool, from the great number of possibilities.

To begin with, the most important thing is: you have to ask the right question to get the right answer. And you have to express the question correctly! This is so important for the work that follows. The success of the therapy may even depend upon it.

TEN KEY POINTS FOR THE SUCCESSFUL USE OF THE PENDULUM

The pendulum is probably the most popular tool for testing. There are different designs: pendulums made of metal, crystals, wood ... and even a ring hanging on a necklace, fulfils the task. The important thing is the knowledge that there is 'somebody' directing the pendulum. You enter an energy field, into the morphogenetic field, or a field of awareness, which provides information. To make sure that you do not attract negative energy fields or spirits, you should ensure that you work with the pendulum under the protection of the angels.

Once you are used to a certain procedure, nothing can go wrong and you will get productive answers, showing you the way forward.

- 01) Cleansing the pendulum: a pendulum should be energetically cleansed before use, at least once a week. The Angel Aura Essence 'Energetic Cleansing' is ideal for this. Spray a few drops on to a cloth, and rub the pendulum with it.
- 02) Defining your personal YES and NO: now you should find out how the pendulum shows a YES and NO. The movement of the pendulum, indicating a YES, differs from person to person. For me a YES is a circular clockwise rotation, whereas for a friend of mine it is a straight up and down movement.

This is why you should test your individual indication, in the following way:

- Take the pendulum in your hand.
- Hold the pendulum completely still, so that it does not swing.
- Say loudly and clearly, "Show me a YES."
- Watch the movement of the pendulum (up and down, circular clockwise, circular anticlockwise, diagonal, etc.).
- Put down your movement of the pendulum for YES.
- This movement will stay the same for the rest of your life.
- Continue with the question, "Show me a NO", and put down the result.
- Also define the movement of your pendulum for 'yes and no', and questions that are not allowed.

The answer 'yes and no' means that the question has not been asked precisely enough and therefore has to be defined more clearly (see more under 5 'exact question').

If the pendulum answers 'question not allowed', you have to accept that you will not get an answer to your question. It might be that you are not allowed to know the answer because you would miss out on a developing step or experience, or you would invade somebody else's privacy.

If the pendulum answers one question with a combination of YES, NO, or YES and NO, there is no point in continuing. Tiredness, not being grounded or strong emotions might make work with the pendulum impossible.

External energies might also make work with the pendulum virtually impossible. In this case, you should cleanse yourself, and the room, by intensively spraying the Angel Aura Essence 'Energetic Cleansing'. If the pendulum still does not give precise answers, you should stop, otherwise you might get inaccurate results.

- 03) Protection and Guidance: as mentioned before, make sure you are in contact with the positive spiritual world, as soon as you work with the pendulum. Therefore, it is important to call your Higher Self, your Guardian Angels, or Archangel Michael, and ask them for protection. Explicitly ask again, "Who is guiding my pendulum? Is it one of my Guardian Angels? Is it my Sun Angel? Is it an Archangel?" If the answer is NO, you can go on, "Am I connected with a positive energy? " If the answer is a NO again, put the pendulum down. You should also then cleanse your aura.
- 04) Setting up a 'standing order': of course you can ask the Higher Self, your Guardian Angels, or Archangel Michael, for protection and guidance before every use of the pendulum. But you can also set up a 'standing order'. You ask the angels for automatic protection, and guidance with every use of the pendulum.
- 05) Exact question: asking the exact question is an essential point with the use of a pendulum. If you ask two questions in one sentence, you must not be surprised if you receive a vague answer. Therefore, avoid sentences like: "Shall I use Symbol no. 30 or 31?" or "Which Aura Essence is important for me? Archangel Michael or Chamuel?" Remember that your pendulum can only answer your questions, with YES or NO, and, therefore, ask questions which can be answered with a YES or NO.
- 06) The word SHALL: for instance you ask a question like: "Shall I use the Angel Aura Essence 'Archangel Michael'?" You will never get an exact answer. What does SHALL mean? It is better to ask, "Is it sensible, and expedient, to use the Angel Aura Essence, 'Archangel Michael', for this problem?" or "Is it, at least, 90% sensible and expedient to use the Angel Aura Essence 'Archangel Michael' for this problem?"
- 07) Exclusion method: if you want to test rationally and efficiently, you should apply the exclusion method: "Where do I find the symbol I need? Is it among the symbols 1–5, 6–10, 11–15?" etc. This helps you find the suitable symbol quickly.
- 08) Ethical and moral boundaries: it is best to avoid curious questions such as: "Has my sister's husband got a girlfriend?" The answers will most likely be contradictive, or wrong. In any case, it is an invasion of your sister's privacy. Even if your sister asks you this question, the pendulum might not say anything. And this is okay, because it is not really meant for this sort of question.

- 09) Everything within reason: do not use the pendulum for hours – it would energetically harm you. Even if you work correctly, you will notice after some time, that working with the pendulum can become draining. People with little experience often complain about tiredness and headache.
- 10) Taking on self-responsibility: there are even people who go to the supermarket with their pendulum to test the ideal sort of flour. This is true! They have forgotten to listen to their feelings, and make spontaneous decisions. Do not become dependent, either on your pendulum, or on any master or guru! (Of course, there are exceptions, when it is important to test food, or drugs, for health reasons.)
- 11) Using tools: some people never test and they swear their intuition is 100% correct. I would be careful with such statements. Own thoughts, feelings or experiences are often mixed up with intuition. This might also be the case when using the pendulum, trying to manipulate the result consciously or unconsciously. Most of the time testing with the help of the pendulum, dowser or kinesiologic muscle test, is more efficient than intuitive choice. Especially when you have hundreds of symbols to choose from.

TESTING WITH PENDULUM TABLES

With the help of the pendulum tables (www.ingridauerbooks.com) you can determine the ideal essence/oil/aura essence for a certain person/situation quickly and uncomplicatedly.

Ideally you should already have some knowledge about the essences/oils, etc. before you work with the pendulum. No matter whether you have already held the essence in your hands or read about it in the book 'Engelessenzen und Engelöle', one thing is for certain: the more information you have saved in your mental body (aura layer) through reading, the more exact will be your test result. If you hold the essence bottle in your hands, you can save its vibration in your mental body, and then ask the pendulum table.

Method

- First take pendulum table 1 and test, whether you need an Angel Essence, a Combi Oil, an Aura Essence, etc.
- With the help of pendulum table 2 you can localize WHICH Angel Essence you need. With the help of pendulum tables 2a, 2b and 2c you can now test which Angel Essence is most important for you at this time.
- Furthermore, you can find:
 - all Angel Combi Essences in pendulum table 3
 - all Angel Combi Oils in pendulum table 4
 - all Angel Transformation Essences in pendulum table 5
 - all Angel Aura Essences in pendulum table 6
 - all Master Aura Essences in pendulum table 7
- Proceed as described with pendulum table 2, and test the subgroups, until you have found the suitable essence/oil/aura essence. Now you can go on:
- With the help of pendulum table 8 you can find out the ideal application for the essences. With pendulum table 9 the ideal application of oils, pendulum table 10 shows you the ideal application of aura essences and pendulum table 11 the right dosage.

Wishing you every success when working with the pendulum,
Ingrid Auer